

Figure 3: Proportion of fresh and frozen embryo transfer cycles transferring one, two, three or more embryos, Australia and New Zealand, 1993-2002

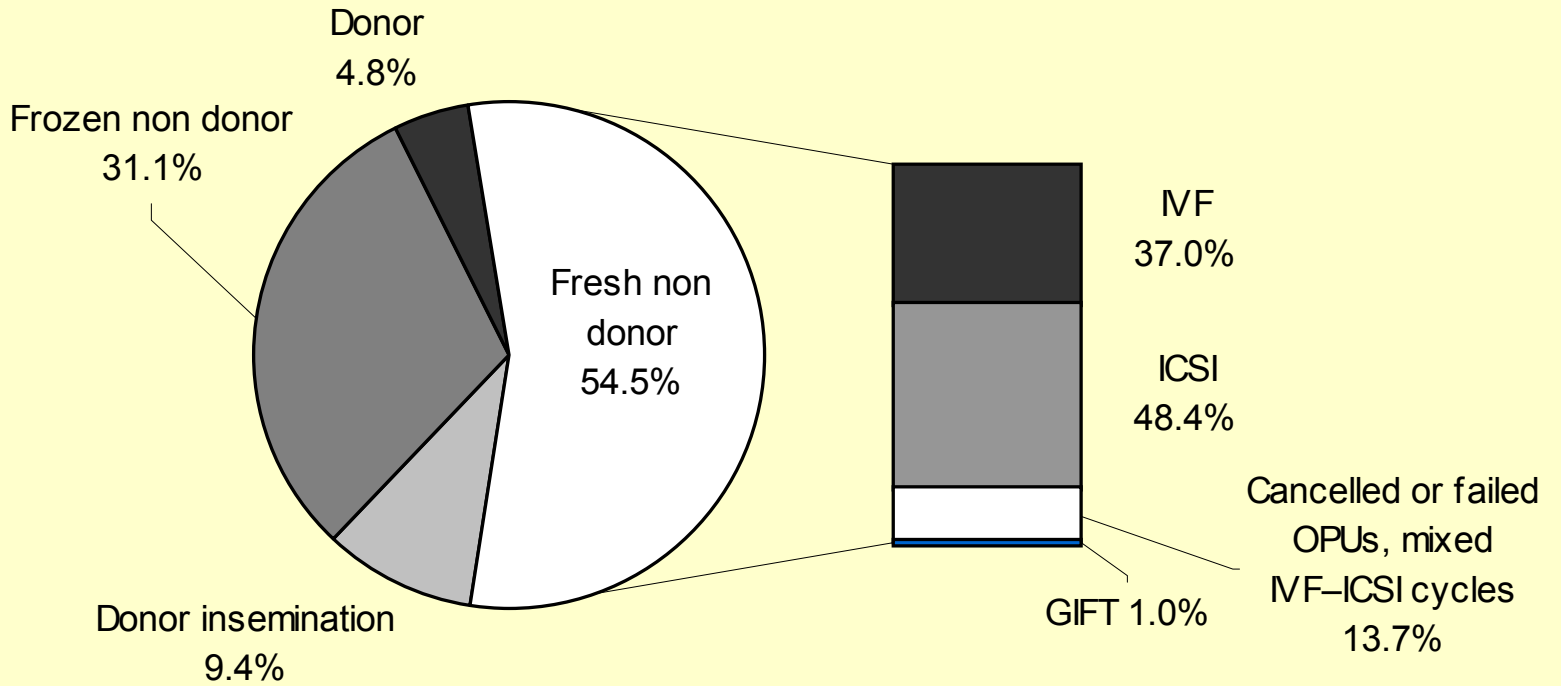


Figure 6 Proportion of ART treatment types, Australia and New Zealand, 2002

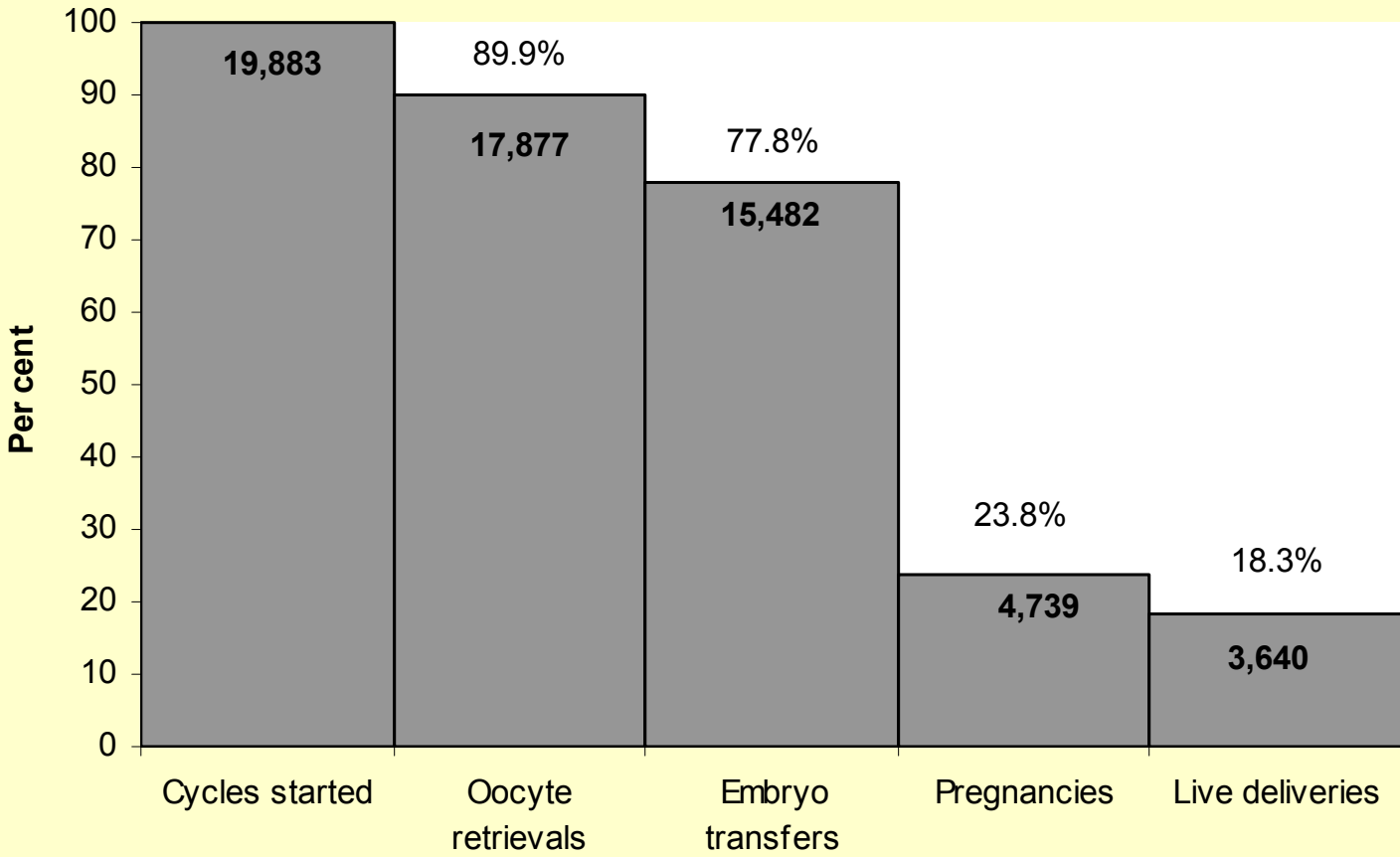
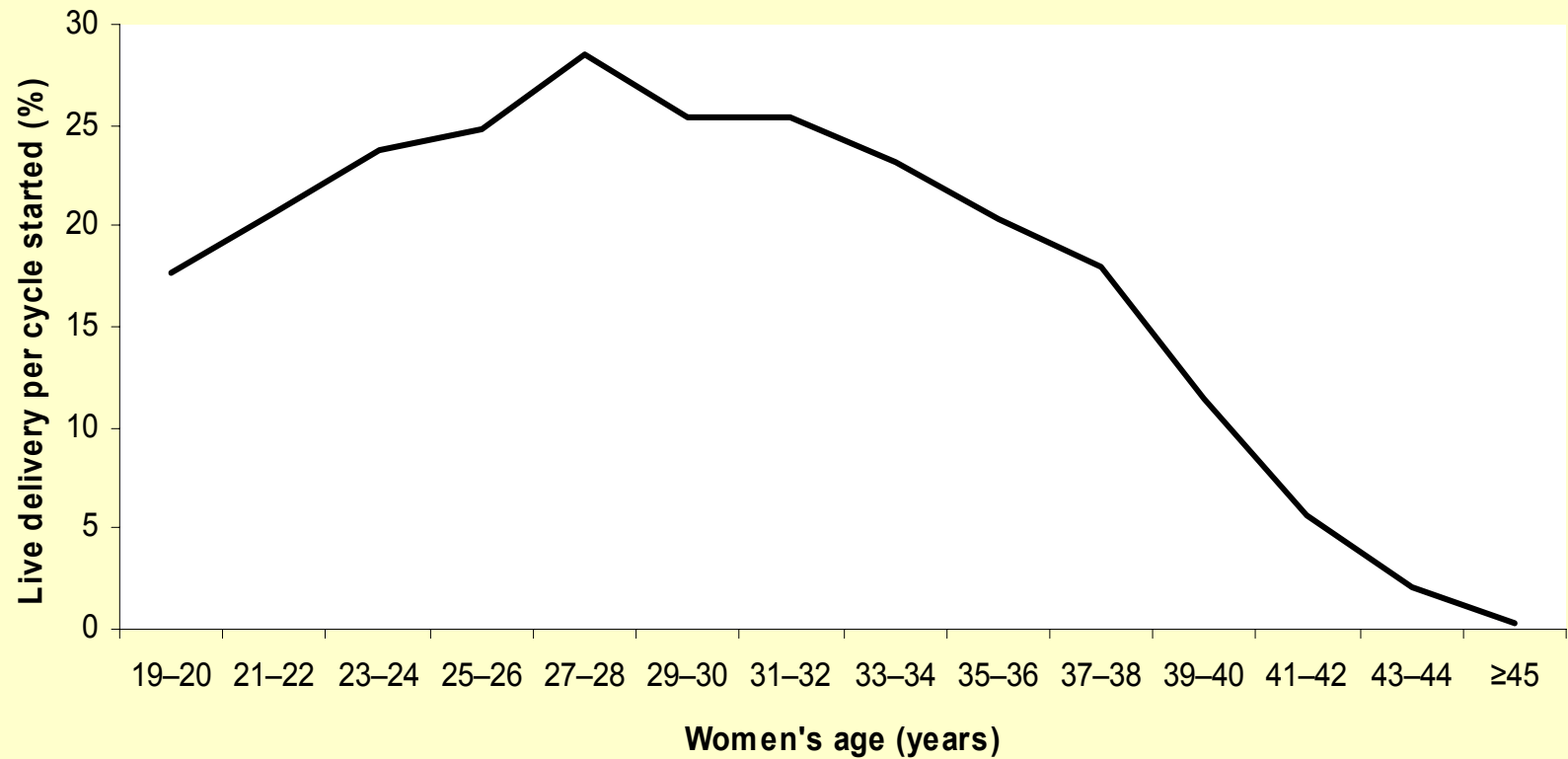


Figure 8: Progression of fresh, non donor ART treatment cycles, Australia and New Zealand, 2002

Table E: Live delivery per cycle started by cause of infertility for fresh, non donor ART treatment, Australia and New Zealand, 2002

Cause of infertility		Number of cycles started	Number of live deliveries	Live delivery per cycle started (%)
Male factor only		5,250	1,107	21.1
Female factor only	Tubal disease	1,986	332	16.7
	Endometriosis	1,189	221	18.6
Multiple causes		6,224	1,044	16.8
Unexplained		3,313	646	19.5
Other (including fibroids, ovulation disorders, premature ovarian failure)		1,921	290	15.1

AIHW National Perinatal Statistics Unit, 2004



Note: values for women aged ≥45 years combined due to small numbers.

Figure 9: Live delivery per cycle started by women's age for fresh, non donor ART treatment, Australia and New Zealand, 2002

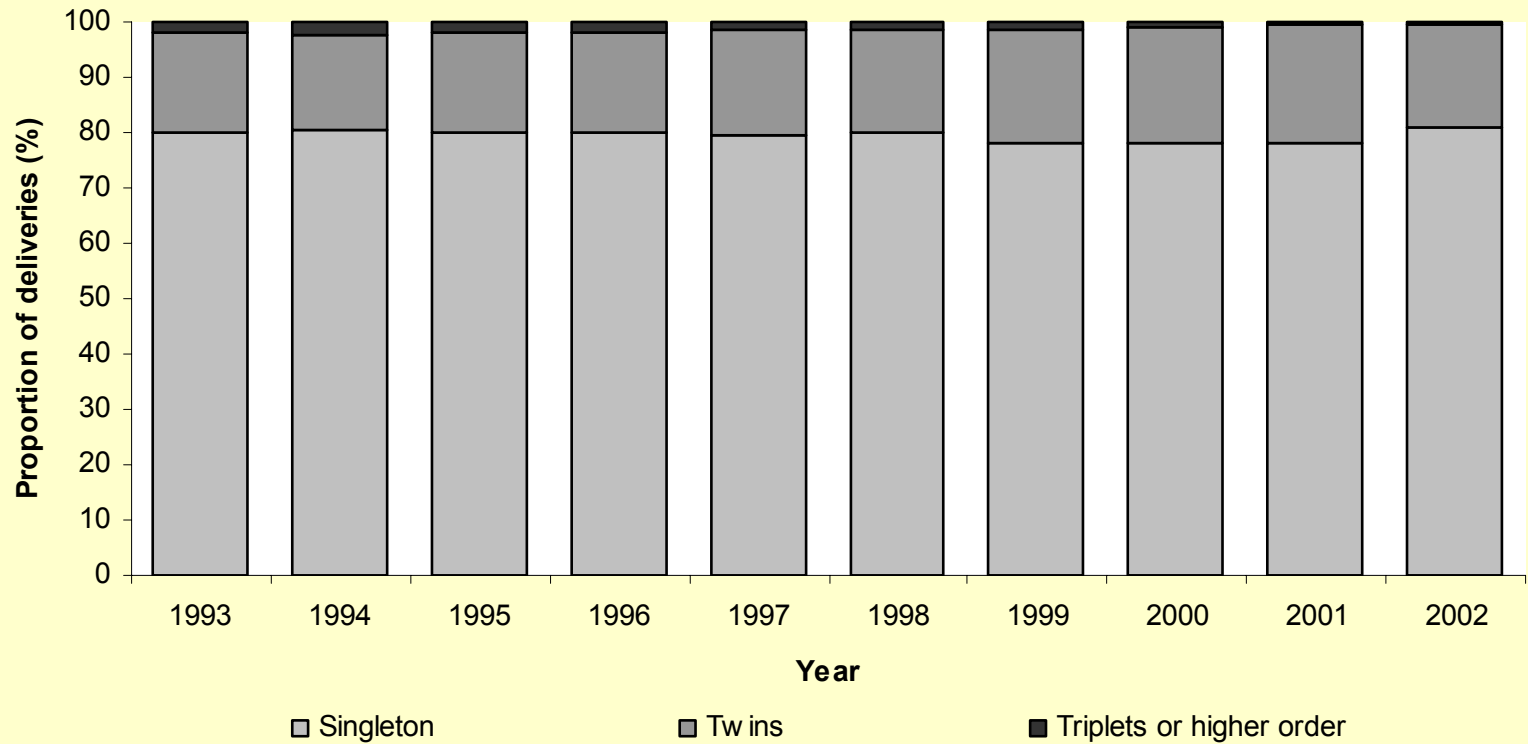


Figure 12: Proportion of singleton, twin and higher order deliveries, all babies ≥ 20 weeks gestation, Australia and New Zealand, 1993-2002

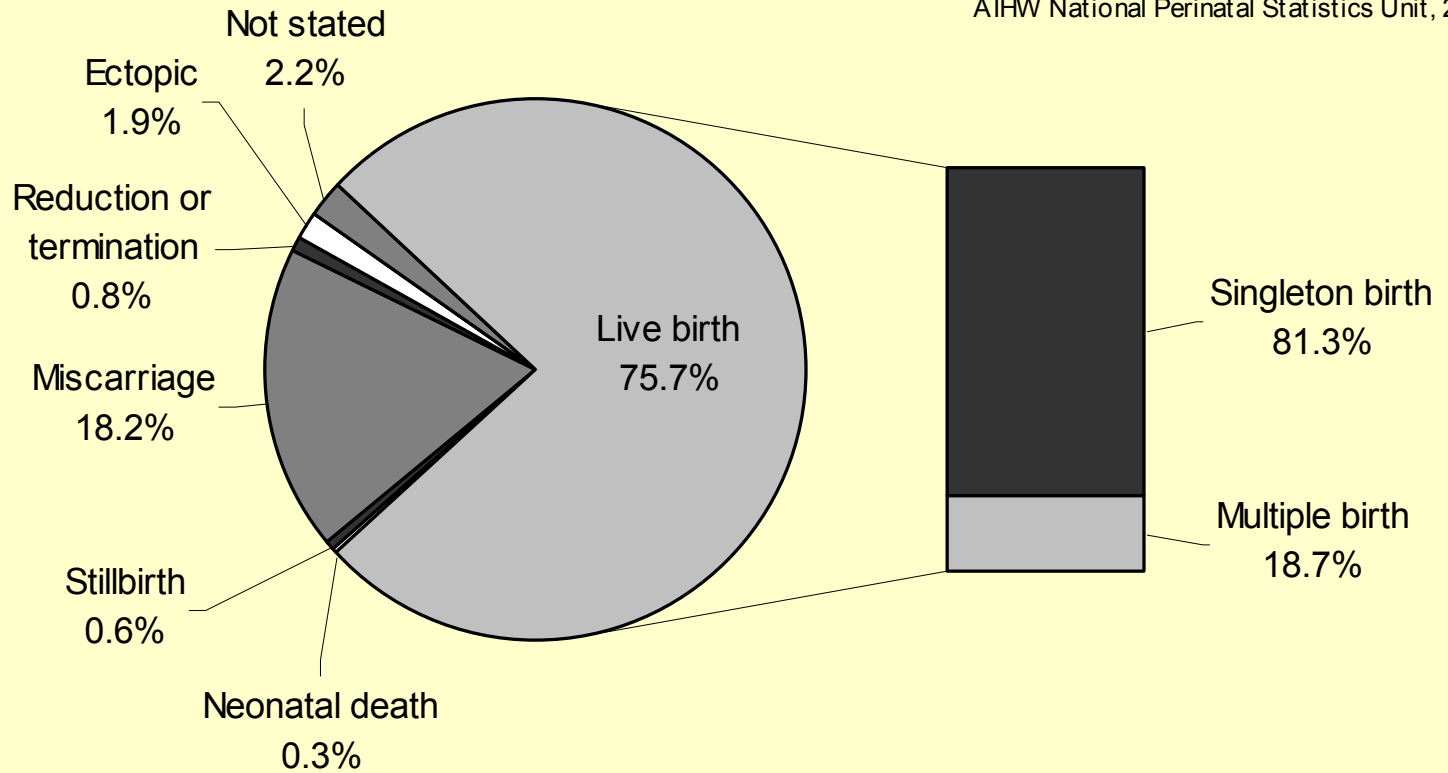


Figure 13: Outcome of ART pregnancies conceived in 2002, Australia and New Zealand